

## RESEARCH ACTIVITIES

NIPORT supports, through relevant research, the Ministry of Health and Family Welfare to develop effective health, population and nutrition (HPN) programmes and policies. It routinely monitors the programme delivery, evaluates programme outcomes and generates information on demographic and reproductive behaviour. Specifically, NIPORT conducts programme focused research studies in the area of-

- Demographic and behavioural aspects
- Programmes and operations
- Human resources
- Population and development

Every year NIPORT conducts/commissions 6-10 studies in priority research areas to further strengthen HPN programmes. It identifies and prioritises research topics through workshops involving the stakeholders and finalises the topics in consultation with concerned programme managers. The study results help the concerned agencies to design appropriate programmes and better target the programme beneficiaries.

### Major Research Works of NIPORT

NIPORT is involved in major national surveys such as:

- Bangladesh Demographic and Health Survey (BDHS)
- Bangladesh Maternal Mortality and Health Care Survey (BMMS)
- Bangladesh Health Facility Survey (BHFS)
- Urban Health Survey (UHS)
- Utilisation of Essential Service Delivery Survey (UESD)



### Dissemination

NIPORT gives due importance in dissemination of research findings to the policy makers, programme managers and the research community for better utilisation of research findings for development of national policies and programmes. It regularly organises national and divisional dissemination seminars and publishes policy briefs, key findings, fact sheet, wall chart, etc.

NIPORT publishes an Annotated Bibliography on Population, Maternal and Child Health and Family Planning Research in Bangladesh in every 2-3 years. It compiles abstracts and indexes as reference materials.



### Research Capacity Building

Capacity building of NIPORT professionals and research community is another important component of NIPORT's function. NIPORT organises research methodology training and provides data support and mentoring for secondary analysis and academic researches.

### NIPORT Library and Information Services (NLIS)

NIPORT introduces an integrated information system with an aim to collect and disseminate worldwide information on population, family planning, maternal and child health, and nutrition with more detailed information about Bangladesh. NLIS provides information to individuals and organisations in the country and abroad in response to requests. NLIS offers the following services:

- Reference services including digitised bibliographic search through NIPORT Library database;
- Literature search services through HINARI and PubMed;
- Current awareness bulletin;
- Press clipping bulletin and accession register.

## PARTNERSHIPS AND COLLABORATIONS

NIPORT maintains strong linkages with public, private, and NGO research and training institutes and development partners. Some of the organisations that NIPORT has active collaboration include:

- **National Organisations:** NAPD, BIM, BBS, University of Dhaka, BSMMU, James P Grant School of Public Health - BRAC University.
- **International Organisations:** ICDDR,B, Save the Children, ICF International and MEASURE Evaluation, USA.
- **Development Partners:** USAID, World Bank, UNFPA, UNICEF, DFID, JICA, NUFFIC.

NIPORT also maintains vertical linkages with DGFP, DGHS, Health Engineering Department, Directorate of Nursing Services and other related organizations of MOHFW.

## NIPORT HEAD OFFICE AT DHAKA



### Location Map of NIPORT Head Office



Government of the People's Republic of Bangladesh  
Ministry of Health and Family Welfare

## NATIONAL INSTITUTE OF POPULATION RESEARCH AND TRAINING (NIPORT)



13/1 Sheikh Shaheb Bazar, Azimpur, Dhaka-1205, Bangladesh  
Phone: 88-02-9662495, 9612193, 58611418, 58611206  
Fax: 88-02-58613362  
Email: dg.niport77@gmail.com  
Website: www.niport.gov.bd

## INTRODUCTION

National Institute of Population Research and Training (NIPORT) develops human resources and generates evidence for improving health, population and nutrition programmes and policies in Bangladesh.

It is an institute under the Ministry of Health and Family Welfare (MOHFW). Established in 1977 as National Institute of Population Training (NIPOT), the institute started with developing human resources for the family planning programme. Next year, a research unit was added to the institute to meet the needs for relevant demographic, social and bio-medical research as well as evaluations of the activities of the institute itself. Hence, NIPORT was born.

### Vision

To be the centre of excellence for quality training and research in health, population and nutrition sector by 2030.

### Mission

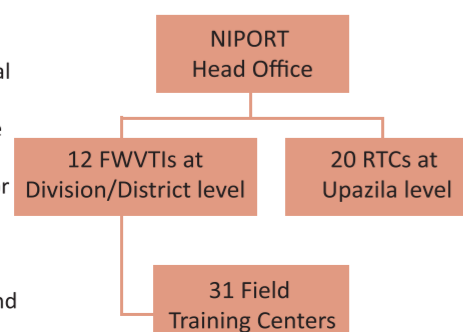
To help Bangladesh achieve the goal of a healthy population by providing high quality training and conducting need-based research for improving health, family planning and nutrition outcomes.

NIPORT is the only training institute under MOHFW that provides residential training for programme personnel. NIPORT has well-equipped training facilities from national level to upazila level. In addition to the facilities at NIPORT head office in Dhaka, there are 12 Family Welfare Visitors' Training Institutes (FWVTIs) at division or district level, 20 Regional Training Centres (RTCs) at upazila level and 31 Field Training Centres (FTCs) attached to FWVTIs.

The FWVTIs and RTCs are geographically located in such a way so that the trainees from all regions can easily reach the centres, participate the training courses and stay there comfortably. The research unit of NIPORT is housed within the head office.

## MANAGEMENT AND OPERATIONAL STRUCTURE

NIPORT has three functional units: Administration, Training, and Research. The Director General heads NIPORT, assisted by Director (Administration), Director (Training), Director (Research) and a healthy pool of qualified training and research professionals.



## TRAINING ACTIVITIES

### Training Unit at NIPORT Head Office

NIPORT head office mainly provides management training to the district and upazila level programme managers of Directorate General of Family Planning (DGFP) and Directorate General of Health Services (DGHS). Specific training courses include Programme Management, Financial Management, Essential New-born Care (ENC), Office Management and Behaviour Change Communication (BCC), Training of Trainers (TOT), Computer Training, Orientation Training for newly recruited MO (MCH-FP) and other collaborative training programmes.

The training facilities available at NIPORT head office include 19 faculty members, a pool of resource persons, 3 well equipped classrooms, hostel with 30 seats, dining hall, library, auditorium, conference room and transport for field practice.



### Family Welfare Visitors' Training Institutes (FWVTIs)

FWVTIs mainly provide paramedic training. Each FWVTI has 10 faculty members and a pool of resource persons; there are 2 classrooms, a hostel with 50-60 seats, a dining hall, an auditorium, vehicles for field practice and a space for sports. FWVTIs mainly provide paramedic training to the service providers of the Directorate General of Family Planning. The major trainings provided at FWVTIs are:

- Basic Training for Family Welfare Visitor (FWV) - 18 months
- Induction Training for Sub-Assistant Community Medical Officer (SACMO) - 10 days
- Refresher Training for FWV and SACMO - 5 days
- Early Learning Childhood Development (ELCD) and Birth Registration and Child Rights (BRCR) Training for FWV and SACMO - 5 days
- Counselling, IUD & Infection Prevention Training for Assistant Upazila Family Welfare Officer (MCH-FP) and FWV - 5 days



FWVTI, Bogra

### Regional Training Centres (RTCs)

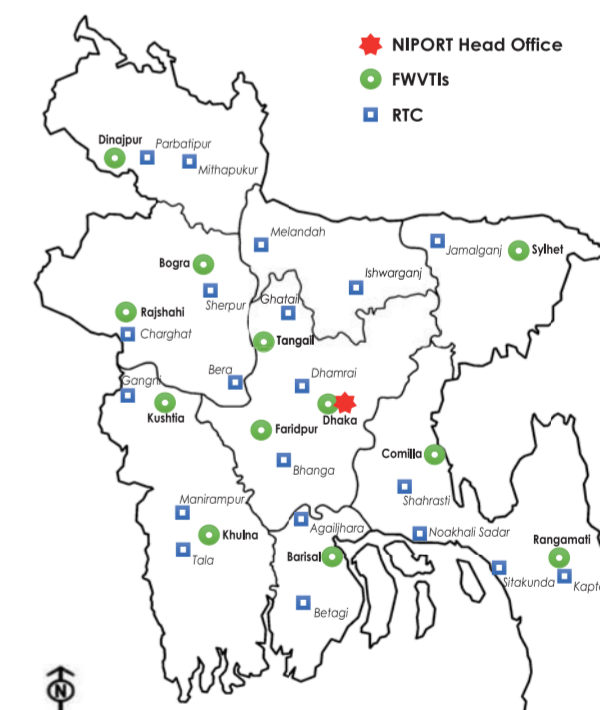
RTCs mainly provide training to the fieldworkers and their supervisors. Each RTC has 4 faculty members, a pool of resource persons, 1-2 classrooms, hostel with 40 seats, dining hall, auditorium, transport for field practice and space for games. The major trainings provided at RTCs are:

- Basic Training for Family Welfare Assistant (FWA) - 2 months
- Basic Training for Family Planning Inspector (FPI) - 10 days
- Team Training for FWA and Health Assistant (HA) - 5 days
- Monitoring, Supervision and Follow-up Training for Field Supervisor - 5 days
- Early Learning & Childhood Development and Birth Registration & Child Rights Training for FWA, HA, FPI, and Assistant Health Inspector (AHI) - 5 days
- Behaviour Change Communication (BCC) - 5 days



RTC, Gangni, Meherpur

### Location Map of NIPORT Training Facilities



### Curriculum Development

NIPORT follows a unique process to develop skill-based curricula to impart effective training. NIPORT organises series of workshops to bring together programme managers, researchers, curriculum developers, trainers and trainees of relevant organisations, who contribute to the development of curricula for the training courses of NIPORT.

